



VIP Code	Vendor Code	Description	Case Pack
260601	LW200	CrispyCoat Crispy On Delivery Fries, Regular Cut, 3/8"	6/5 lb

The world's first comprehensive fry delivery solution.

Thanks to an even-batter coating & new vented delivery cup, these Crispy On Delivery Fries can maintain their crispiness for up to 30 minutes.

Introducing: Crispy on Delivery

Revolutionary Crispy on Delivery fries



- Revolutionary coating to help ensure fry quality up to 30 minutes when using the Crispy on Delivery cup
- Designed for delivery, take away and dining in
- Available in a hearty 3/8" cut size

Unique Crispy on Delivery packaging

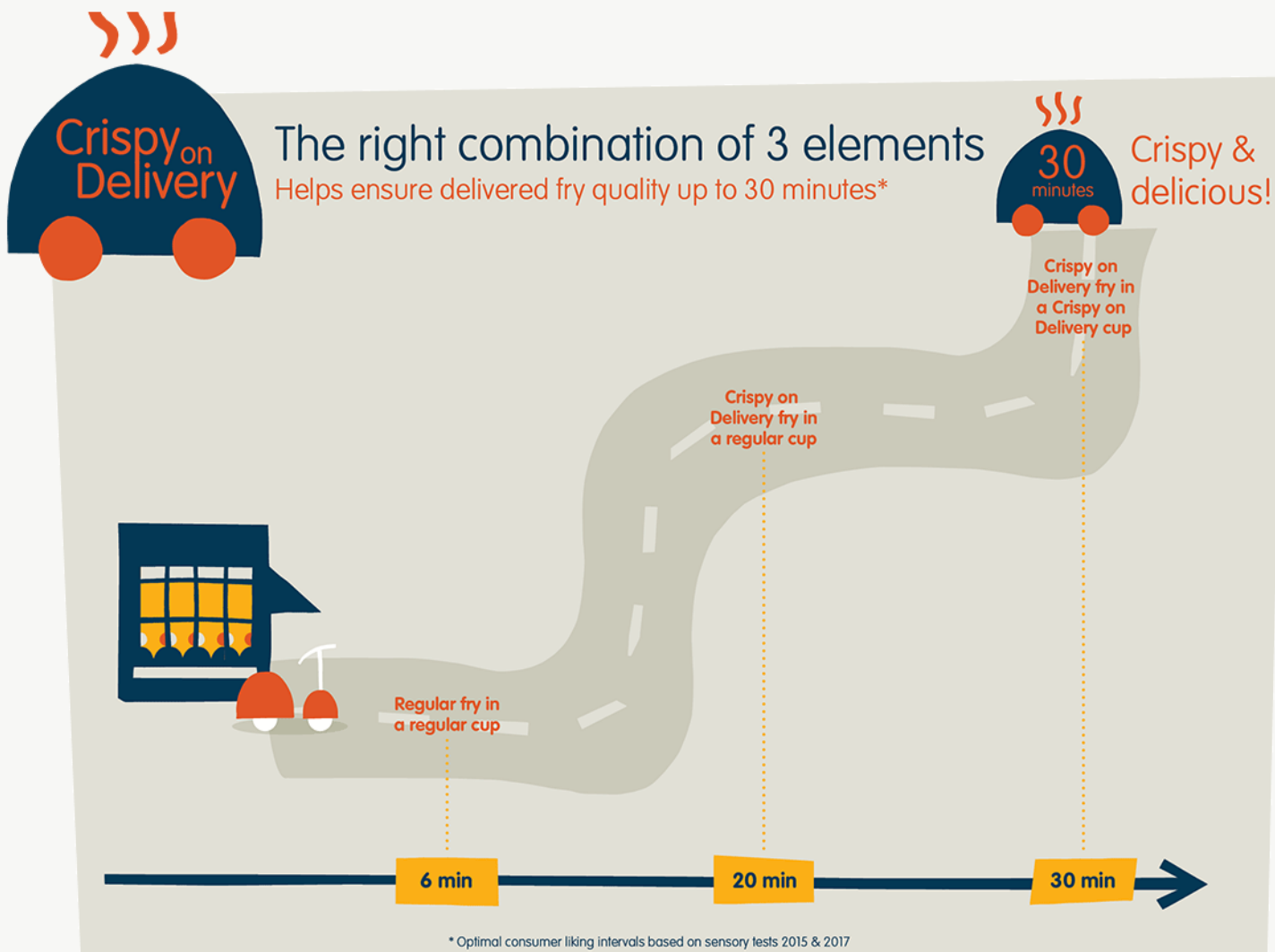


- Unique patents-pending French fry container, designed with vents that allow moisture to escape while keeping fries crispy
- Customizable graphics
- Crispy on Delivery logo as quality seal for consumer

Crispy on Delivery Store to Door support



- Advise on optimal front and back of the house operation
- Store to door training





Item #LW200

Crispy On Delivery Fries Regular Cut

Brand: CrispyCoat Fries

Cut Size: 3/8 RC

Package Size: 6/5#

CrispyCoat Fries have an even-batter coating delivering crispiness while extending hold time. This revolutionary regular cut fry provides exceptional delivery characteristics, maintaining crispiness for 30 minutes when using the Crispy on Delivery cup.

Ingredients

Potatoes, Modified Potato Starch, Vegetable Oil (Contains One or More of the Following: Canola, Palm, Soybean, Sunflower), Rice Flour, Dextrin, Salt, Leavening (Disodium Dihydrogen Pyrophosphate, Sodium Bicarbonate), Dextrose, Xanthan Gum.

Grade: A (EXTRA LONG FANCY-SEASONED FRIES)

Kosher: No

Country of Origin: USA

Shelf Life: 720 days

SCC Code: 10044979222008

Item Number: LW200

NUTRITION

Serving Size: 3 oz (84g/about 15 pieces)

Servings per container: About 160

Calories [per serving]: 130.0

Calories from fat: 40.0

* Percent Daily Values are based on a 2,000 calorie diet. Your daily values may be higher or lower depending on your calorie needs.

**Contains less than 2% of the Daily Value of these nutrients.

Amount Per Serving

		DV%
Total Fat	4.5g	7.0%
Saturated Fat	1.0g	5.0%
Trans Fat	0	
Cholesterol	0.0mg	0.0%
Sodium	230.0mg	10.0%
Potassium	215.0mg	6.0%
Total Carbohydrate	19.0g	6.0%
Dietary Fiber	2.0g	8.0%
Sugars	less than 1g	
Protein	2.0g	
Vitamin A		0%
Vitamin C		8%
Calcium		0%
Iron		2%

COOKING METHODS

Method	Time	Temperature	Additional Instructions
Deep Fry	2 3/4 - 3 1/4 min	345 - 350°F	Deep fry from frozen state. Fill basket 1/2 full.

SHIPPING & STORAGE

Shipping Information		Product Information	
Net Weight	30.0000	Grade	A (EXTRA LONG FANCY-SEASONED FRIES)
Gross Weight	32.0000	Country of Origin	USA
Count Per Pound	N/A	Kosher Status	No
Case Cube	1.25	Shelf Life	720 days
Ti/Hi	9,8		

Handling Instructions

Do not drop. Handle like eggs. Perishable, keep frozen. Store at 0°F or colder.